



Women's Health
Council of RI

INTIMATE PARTNER VIOLENCE

Understanding the Dynamics of Abuse

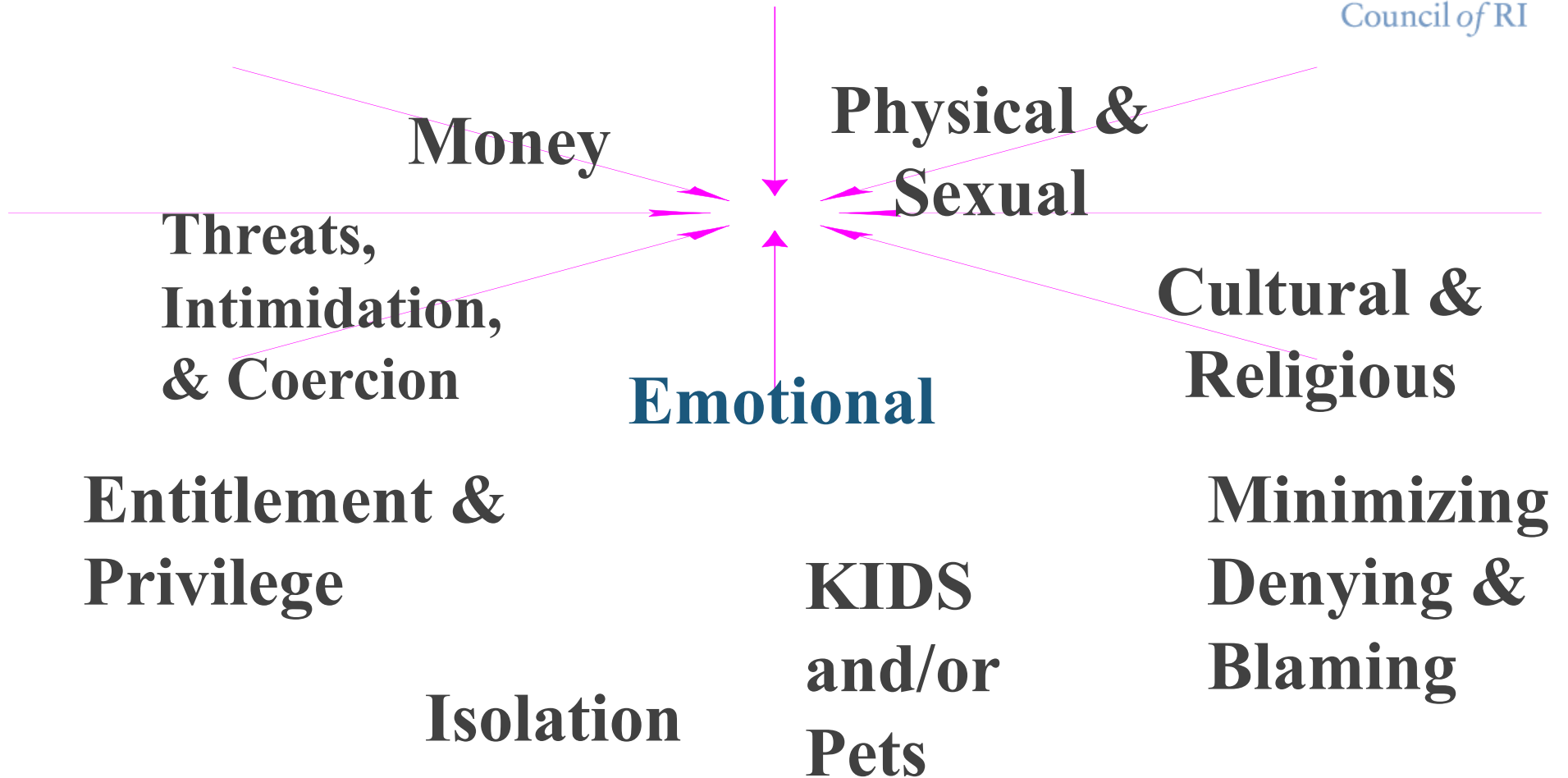
- In order to properly screen patients for IPV, medical providers must understand the dynamics of abuse and need to put aside all judgments, stereotypes and preconceived notions
- IPV is not just a social service issue, it is an issue that everyone needs to be aware of and involved in
- Victims of IPV do not chose to be abused or stay in an abusive relationship because they want to. Victims of IPV face many challenges and barriers to leaving an abusive relationship. You role is vital to breaking the cycle

INTIMATE PARTNER VIOLENCE

The Power and Control Wheel



Women's Health
Council of RI



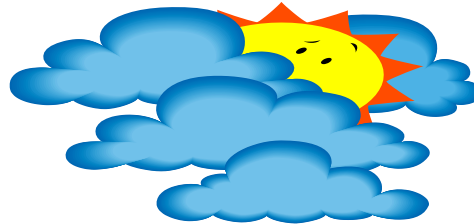
INTIMATE PARTNER VIOLENCE

The Cycle of Violence



Women's Health
Council of RI

Tension



Explosion



Honeymoon

INTIMATE PARTNER VIOLENCE

Barriers to Leaving



Women's Health
Council of RI



INTIMATE PARTNER VIOLENCE

Intervention Begins With You



Women's Health
Council of RI

- You are all in a unique position to intervene and screen patients for violence
- If done properly, medical providers will be able gain valuable information about a patient's medical history and medical conditions as well as provide proper and complete medical diagnosis
- Victims of IPV indicated that they would like to be screened by medical providers*
- R A D A R:
 - Routinely screen for IPV, Ask patient directly and validate, Document in medical record, Assess for safety, Review options and make referrals

*(Friedman, L., Samet, J., Roberts, M., Hudlin, M., Hans, P. 1992. Inquiry about victimization experiences: A survey of patient preferences and physician practices. *Archives of Internal Medicine*.152:1186-1190.)