

# **EVIDENCE2SUCCESS:**

## *IMPROVING OUR CHILDREN'S FUTURES*

APRIL 25, 2013

The Annie E. Casey Foundation



# Learning Objectives

1. Overview and Objectives of Evidence2Success
2. Impact of Risk & Protection on Child Wellbeing
3. Resources for Proven Programs
4. Evidence2Success Model of Collaboration for Collective Impact



Women's Health  
Council of RI

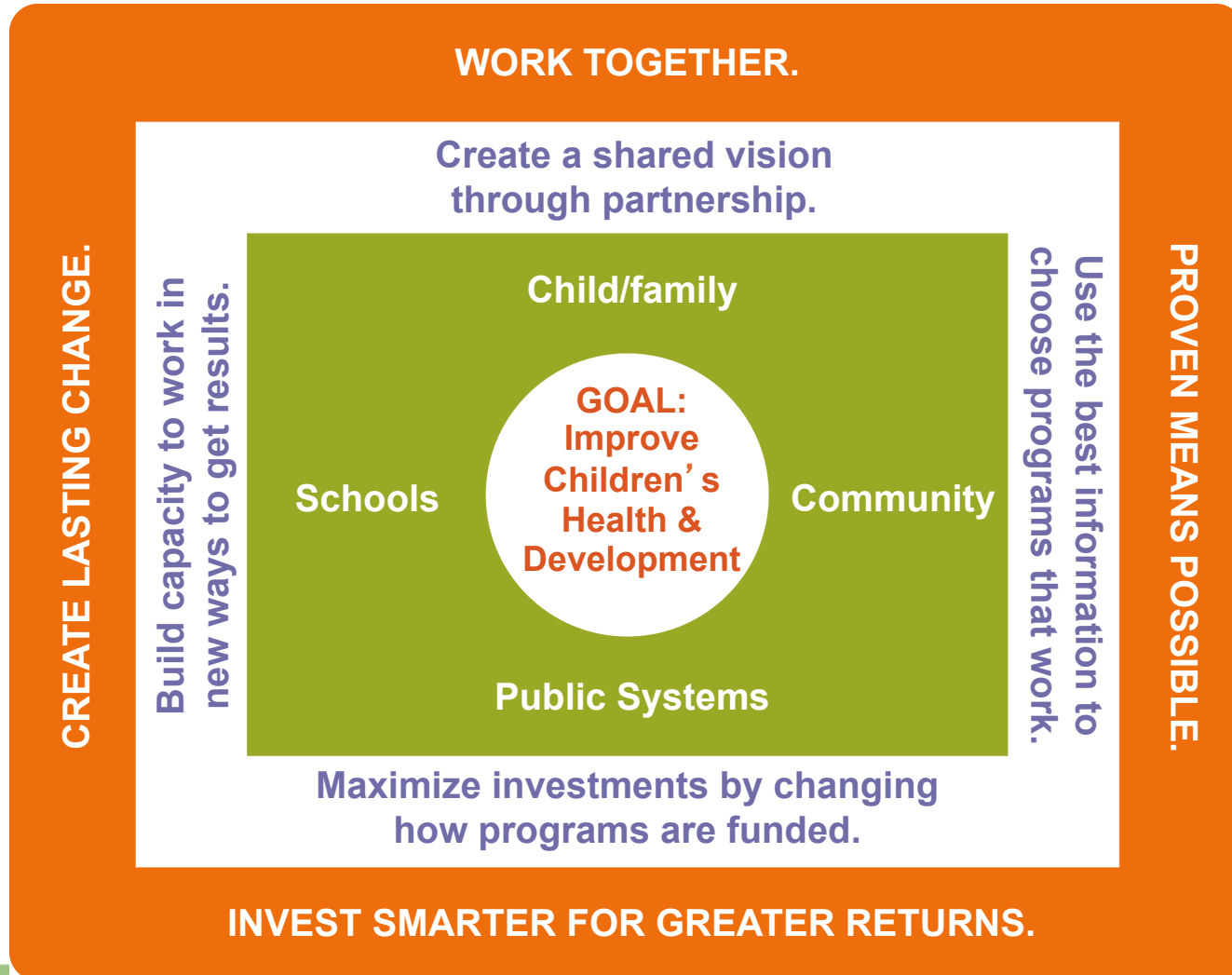
# Vision for Evidence2Success

- Improve outcomes for all children by improving risk and protection at the community level
  - Change relationships among public systems, schools, communities, and families by **creating effective partnerships**
  - **Use the best available data** on children's strengths and needs to **choose proven programs** that have been shown to produce better child well-being outcomes
  - Invest in a portfolio of proven programs that **reaches every eligible child**
  - Redirect a percentage of spending from costly treatment to **prevention and early intervention** over time
  - Build capacity to **change policy and practice** and to implement proven programs according to guidelines

# Evidence2Success combines the best of what works to achieve child well-being

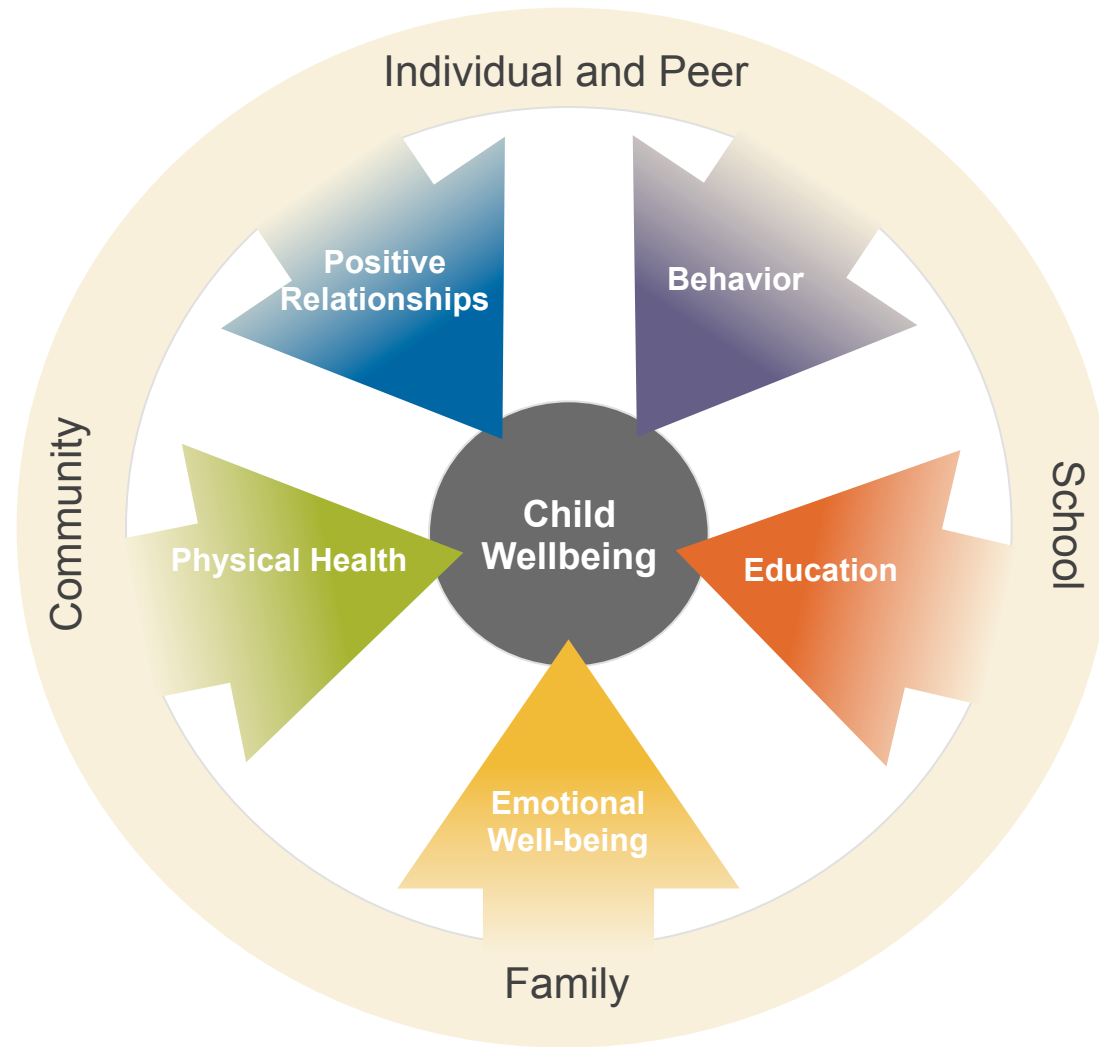


Women's Health  
Council of RI





Women's Health  
Council of RI



# What gets in the way of optimal development?

## *Risk factors*



- Interrupt the process of positive social development
- Increase the likelihood of negative outcomes
- Found in all areas of influence:
  - community
  - family
  - school
  - peer/individual

# What promotes positive development?

## *Protective Factors*



- Promote positive social development
- Increase the likelihood of positive outcomes, even in the presence of risks
- Found in all areas of influence:
  - community
  - family
  - school
  - peer/individual



## Common risk factors can predict multiple outcomes.

Women's Health  
Council of RI

| Risk Factors                               | Outcomes        |                |                 |          |                      |   |
|--|-----------------|----------------|-----------------|----------|----------------------|---|
|  | Substance Abuse | Teen Pregnancy | School Drop-Out | Violence | Depression & Anxiety |   |
| Individual/Peer                            |                 |                |                 |          |                      |   |
| Early and Persistent Antisocial Behavior   | ✓               | ✓              | ✓               | ✓        | ✓                    | ✓ |
| Alienation and Rebelliousness              | ✓               | ✓              |                 | ✓        |                      |   |
| Friends Who Engage in the Problem Behavior | ✓               | ✓              | ✓               | ✓        | ✓                    |   |





Women's Health  
Council of RI

# What are the five key points about risk and protective factors?



1. In every sphere
2. Same factors predict many well-being outcomes
3. Addressing one can impact many outcomes
4. Similar effect across racial and ethnic lines
5. More protection = Fewer problems  
More risk = More problems



Women's Health  
Council of RI

**Where can I find programs that address  
risk and protective factors?**



## **What benefits do proven programs offer?**

1. Improve child well-being at a population level
2. Stronger and more consistent positive outcomes for children and youth in the community
3. Strong ethical argument – avoid potential harmful effects
4. Potential cost savings to taxpayers and society



Women's Health  
Council of RI

# Blueprints for Healthy Youth Development

<http://www.blueprintsprograms.com/>

**CONTACT**

*Blueprints*  
FOR HEALTHY YOUTH DEVELOPMENT

ASSESS NEEDS ALL PROGRAMS PROGRAM SEARCH PROGRAM CRITERIA NOMINATE PROGRAM ABOUT US RESOURCES

**MATCHING PROGRAMS TO  
CHILDREN'S NEEDS**

ASSESS YOUR NEED FOR A PROGRAM >>



**HOW WE KNOW WHAT WORKS**



Blueprints for Healthy Youth Development helps you match children's needs to cost-effective programs that have been proven to help them reach their full potential. Find programs that meet the highest scientific standard of evidence for promoting youth behavior, education, emotional well-being, health, and positive relationships.

[Frequently Asked Questions \(FAQ\)](#)

**YOUR FEEDBACK**

**FIND WHAT WORKS**

**HELP WITH THESE OPTIONS**

**FOLLOW OUR STEP BY STEP  
APPROACH TO FIND A PROGRAM THAT  
FITS YOUR NEEDS.**

STEP 1: Search by  
Program Outcomes:

☐ BEHAVIOR

☐ EDUCATION

**SKIP OUR STEP BY STEP APPROACH  
AND GO DIRECTLY TO OUR PROGRAM  
SELECTOR.**

The Program Selector will assist in finding specific programs that match the needs of your community or targeted population.

**PROGRAM SELECTOR**



## Other Database Resources

- SAMHSA – National Registry for Evidence-Based Programs
- Dept. of Education – What Works Clearinghouse
- Coalition for Evidence-Based Policy
- Communities That Care
- OJJDP Model Programs Guide
- Office of Justice Programs – Crimesolutions.gov
- Child Trends/LINKS

See <http://www.blueprintsprograms.com/resources/Matrix.pdf>



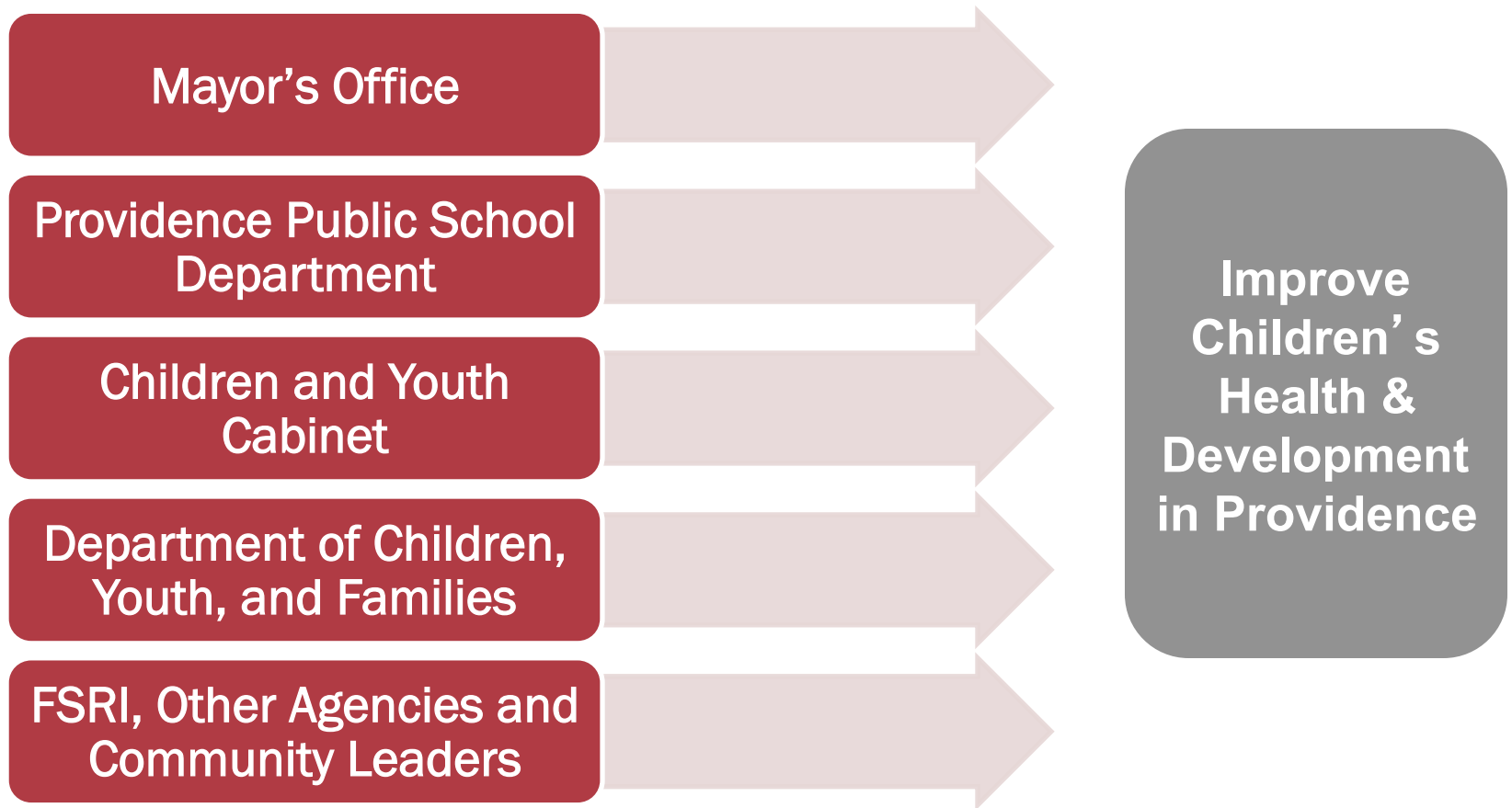
Women's Health  
Council of RI

# **What does Evidence2Success mean for Providence?**

# Evidence2Success is bringing together a range of leaders to improve child outcomes in Providence



Women's Health  
Council of RI





Women's Health  
Council of RI

## Evidence2Success survey content

### Child well-being outcomes

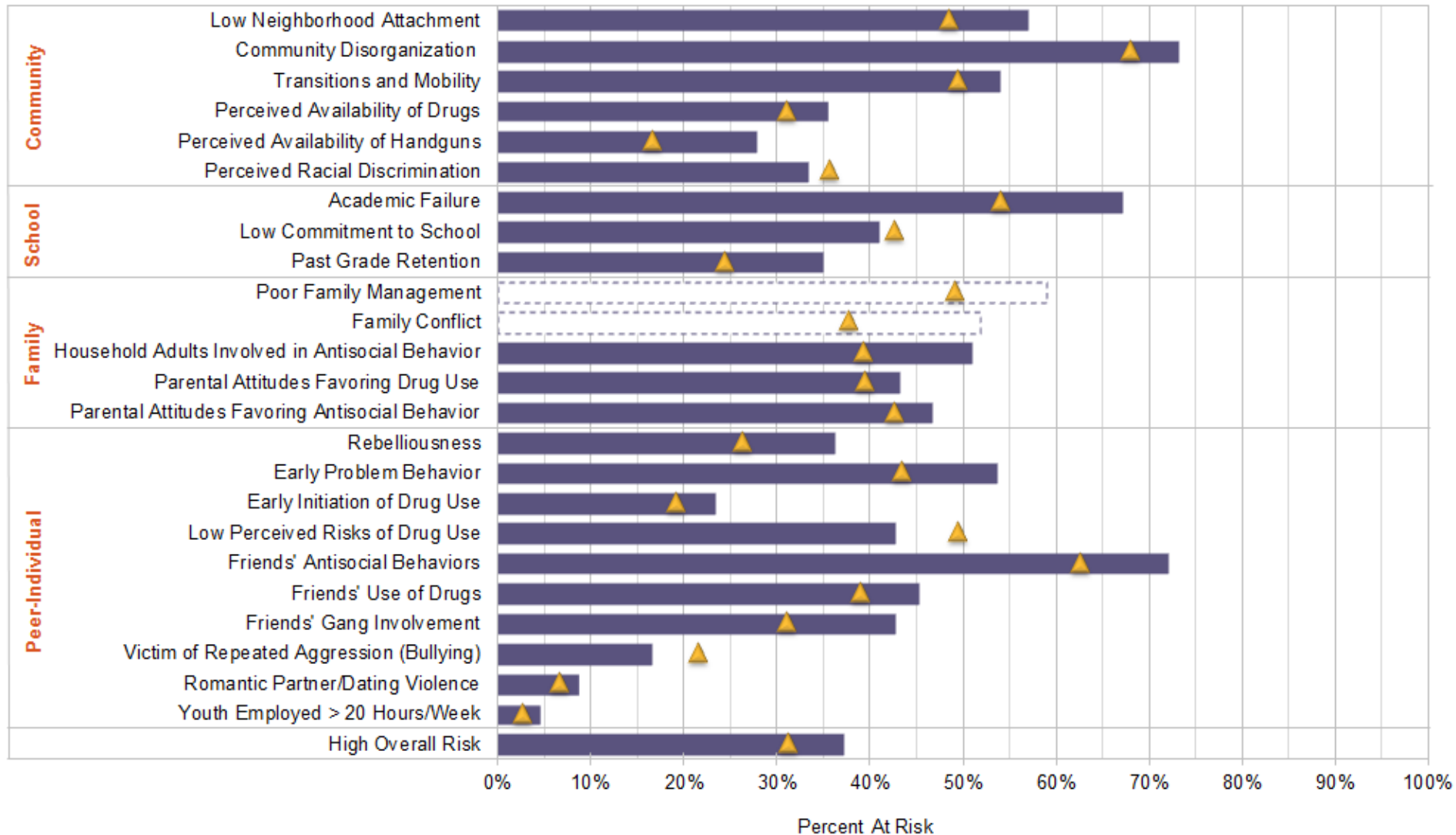
- Five outcome areas
  1. Education
  2. Emotional well-being
  3. Behaviors
  4. Positive relationships
  5. Physical health
- Reported as prevalence

### Predictors of those outcomes – Risk and protective factors

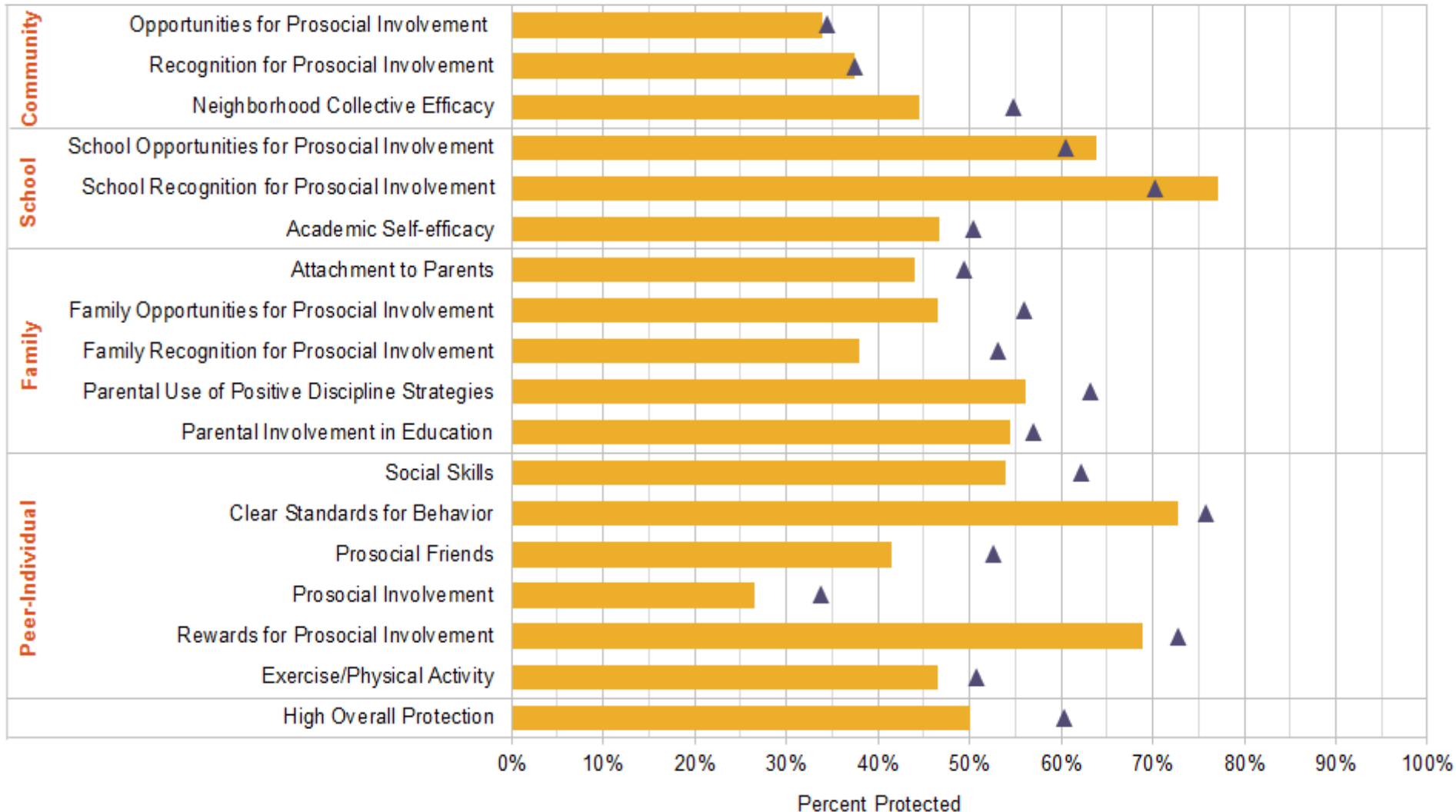
- Four domains of influence
  1. Peer/individual
  2. School
  3. Family
  4. Community
- Reported as percent at risk or percent protected, using cut-point technology



# Surveys pinpoint negative influences that put children at risk...(sample 10<sup>th</sup> grade risk profile)



# ...and the positive influences that protect children (sample 10th grade protective profile)





Women's Health  
Council of RI

## Benefit of Evidence2Success Survey to Providence

- The survey, and the larger Evidence2Success effort, promotes healthy youth development by encouraging public investment in proven programs.
- Provides information on whether children are meeting critical developmental milestones
- Helps identify the root causes that influence children's long-term health and development in all areas of their lives, including their friends, families, schools and communities.
- Opportunities to explore how PPSD and other partners can achieve collective impact by combining resources to invest in proven programs that address shared priorities.



Women's Health  
Council of RI

## What's next for Evidence2Success in Providence?

- Continued development of city-wide partnership
- Additional surveys
  - PPSD 5<sup>th</sup> graders
  - Parents of children 0-8 y/o
- Development of a detailed finance strategy
- Neighborhood pilot sites
  - Upper & Lower South Providence, Elmwood
  - West End
- Creation of a longitudinal cohort for tracking outcomes



Women's Health  
Council of RI

## Points of Contact

**Carrie B. Feliz, MPH**

Director, Strategic Community Partnerships

Providence Public School Department

ph: 401-456-9235

[Carrie.feliz@ppsd.org](mailto:Carrie.feliz@ppsd.org)

**Justin Milner, MPA**

Senior Associate

Annie E. Casey Foundation

ph: 410-547-3615

[jmilner@aecf.org](mailto:jmilner@aecf.org)