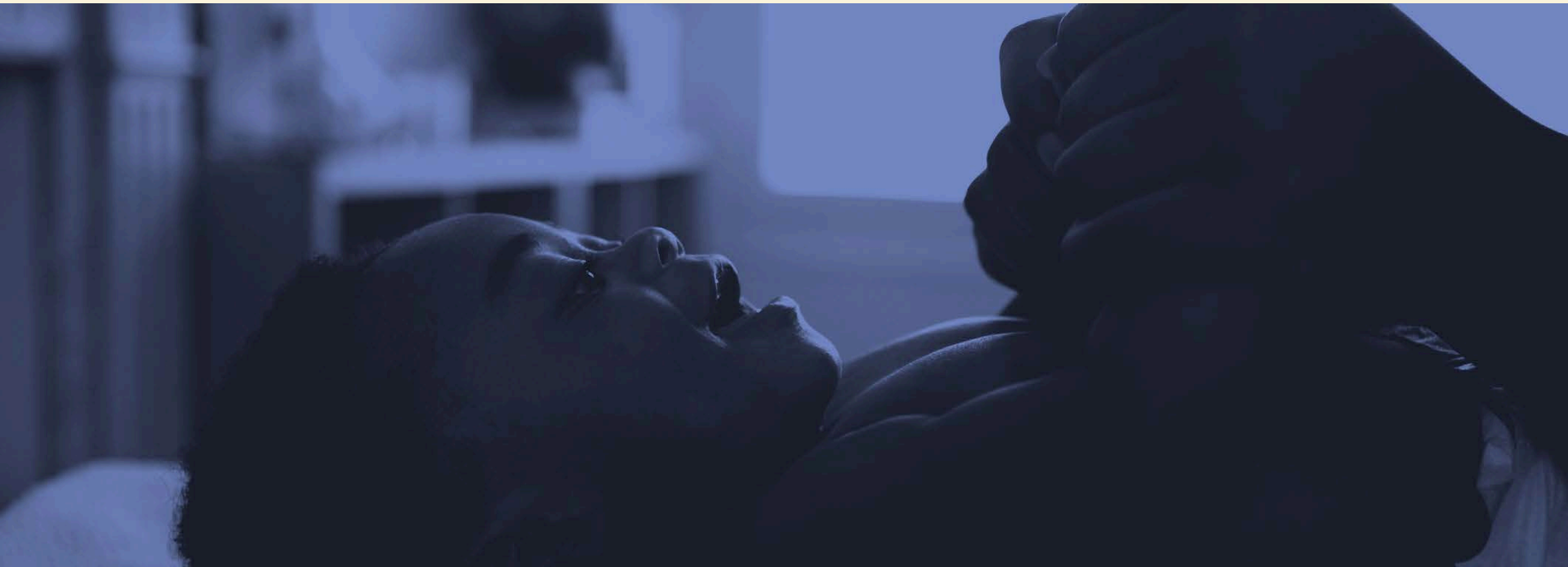


NATIONAL BIRTH EQUITY COLLABORATIVE



Root Causes of Black Maternal Health Inequities: Confronting Disparities & Inequities

November 14, 2019

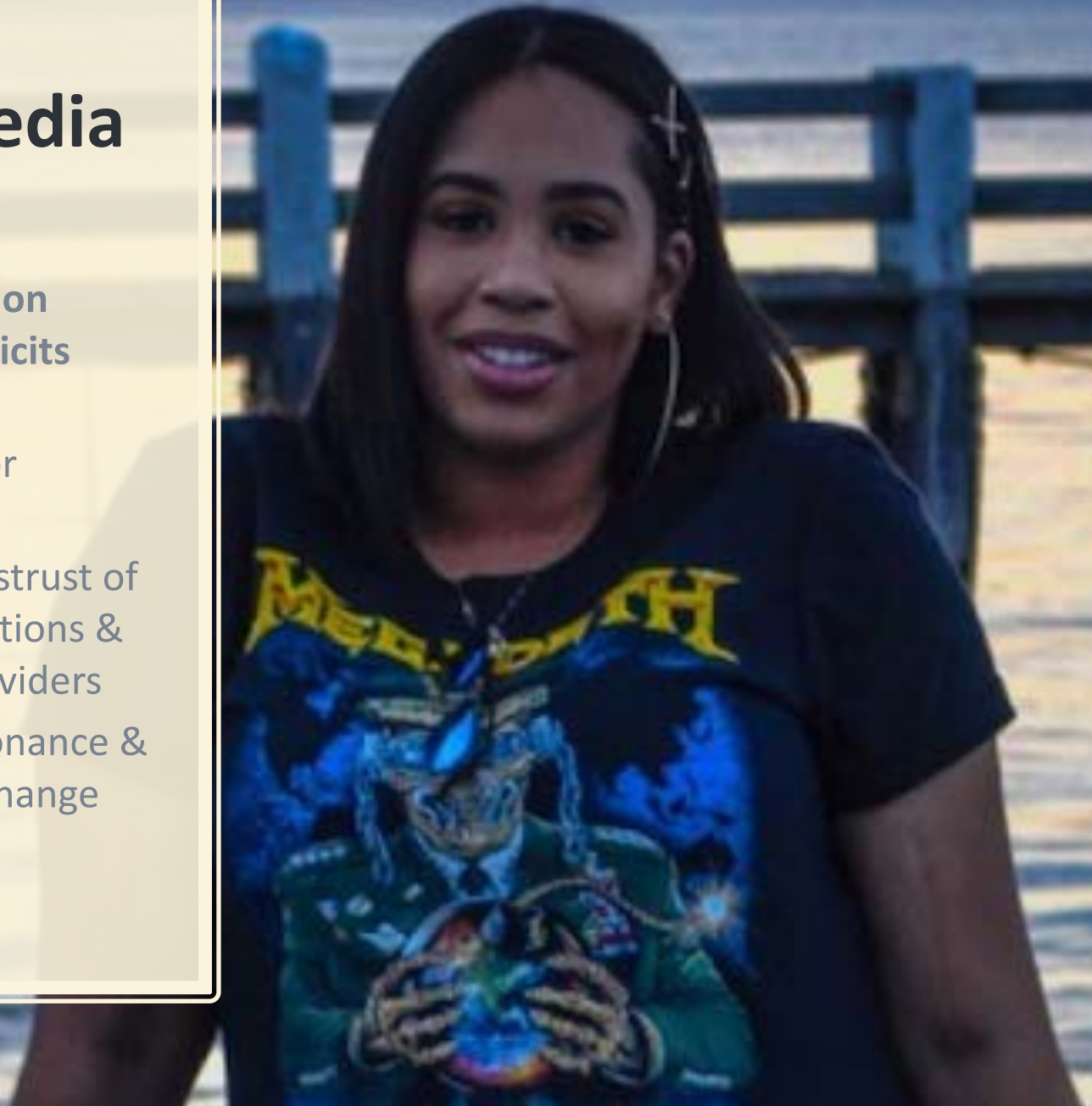
Meditate on this...



Life & Media

Media messaging on maternal death elicits reactions

- Triggers fear for mothers
- Exacerbates distrust of medical institutions & healthcare providers
- Cognitive dissonance & resistance to change from providers



Maternal Mortality/Morbidity

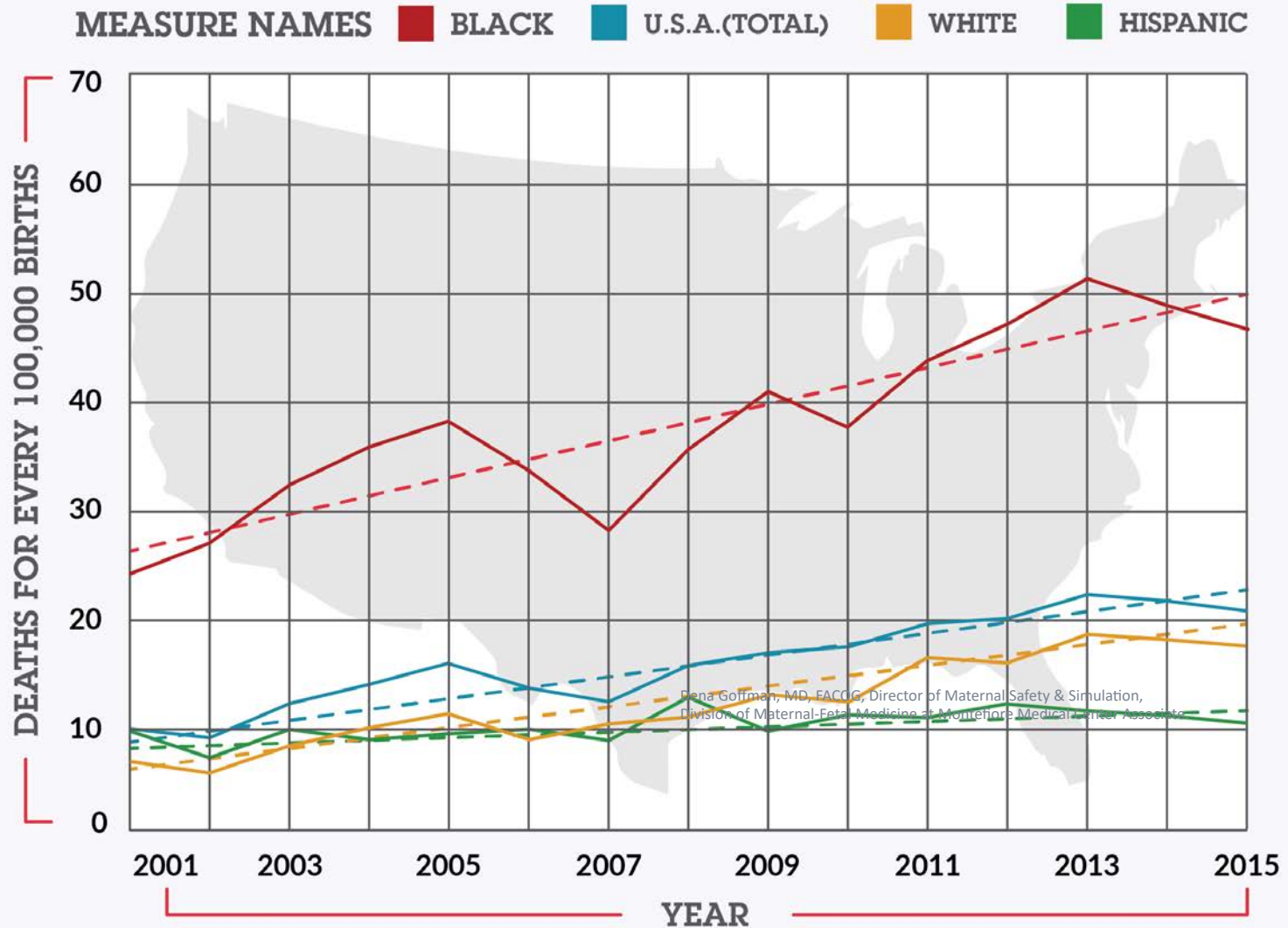
Clinical

- Eclampsia
- Cardiac disease
- Acute renal failure
- Preconception BMI
- Chronic conditions
- Serious obstetric complications
 - Blood transfusion
 - Ventilation
 - Hysterectomy
 - Heart failure

Social

- Housing
- Income
- Neighborhood safety
- Air quality and environmental stresses
- Food Insecurity
- Access to quality, comprehensive health care services
- Low educational attainment
- Unemployment and rigid scheduling

Maternal Mortality/Morbidity



Source: CDC Wonder.

What are “Social Determinants of Health”?

“The social determinants of health are the conditions in which people are born, grow, live, work, and age.

These circumstances are shaped by the distribution of money, power, and resources at the global, national, and local levels.

Examples of resources include employment, housing, education, health care, public safety, and food access.”

Finding the Roots of Inequities

- ❑ Black mothers who are college-educated fare worse than women of all other races who never finished high school.
- ❑ Obese women of all races have better birth outcomes than black women who are of normal weight.
- ❑ Black women in the wealthiest neighborhoods do worse than white, Hispanic and Asian mothers in the poorest ones.
- ❑ African American women who initiated prenatal care in the first trimester still had higher rates of infant mortality than non-Hispanic white women with late or no prenatal.

Root Causes

Institutional
Racism

Class Oppression

Gender
Discrimination
and Exploitation

LABOR
MARKETS

TAX
POLICY

Power and Wealth Imbalance

HOUSING
POLICY

EDUCATI
ON
SYSTEMS

GLOBALIZA-
TION
&
DEREGULA-
TION

SOCIAL
SAFETY
NET

SOCIAL
NETWORK
KS

Safe
Affordable
Housing

Job
Security

Social Determinants of Health

Living
Wage

Quality
Education

Transportati
on

Availability
of Food

Social
Connection
& Safety

Psychosocial Stress / Unhealthy Behaviors

Disparity in the Distribution of Disease, Illness, and Wellbeing

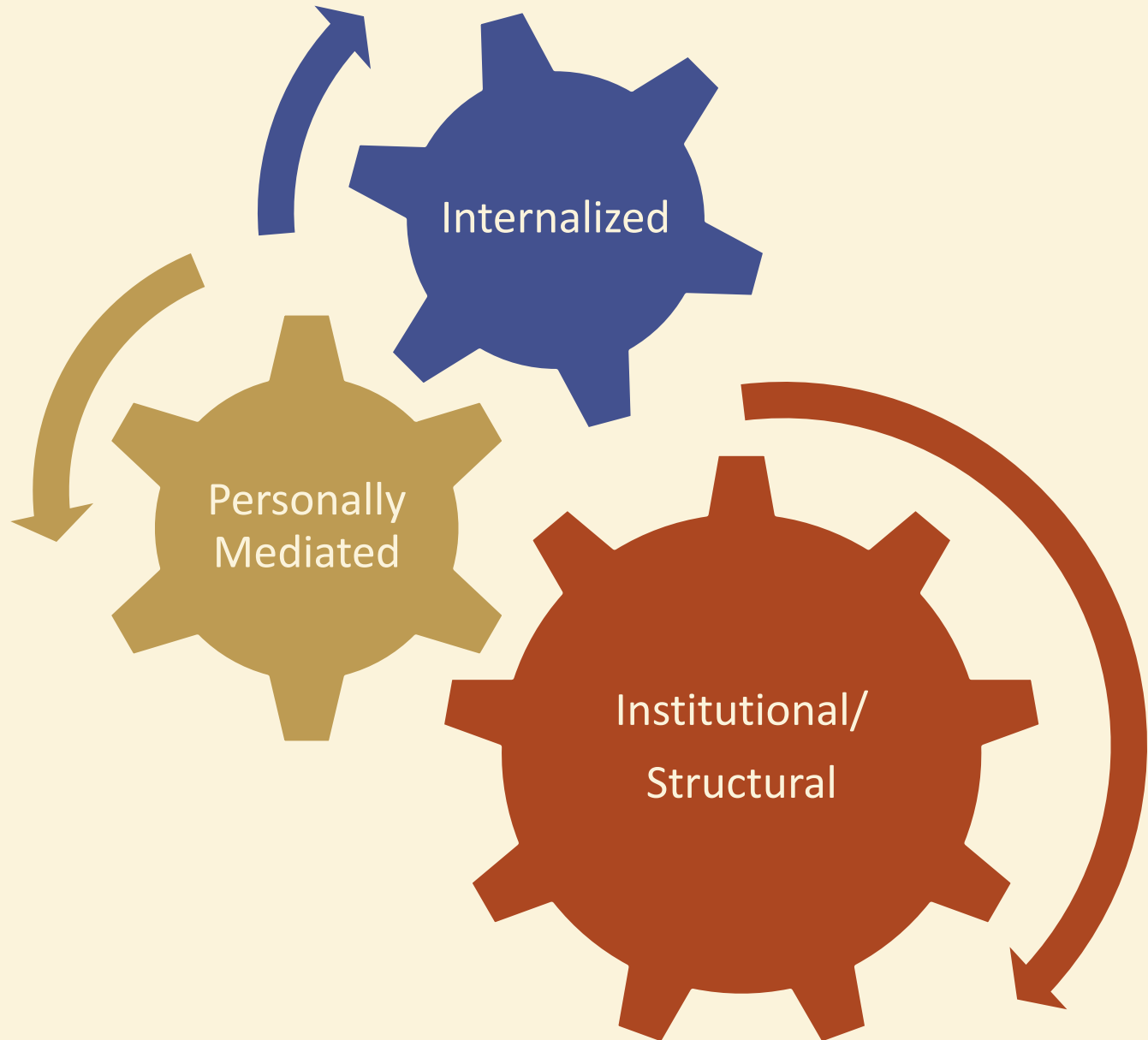
Adapted by MPHI from R. Hofrichter, *Tackling Health Inequities Through Public Health Practice*.

Racism

Racial prejudice or bias used along with social or institutional **power** in order to **advance or oppress** people.

Racism affects health both directly (i.e., via chronic stress) and indirectly, making it a Social Determinant of Health and a Root Cause

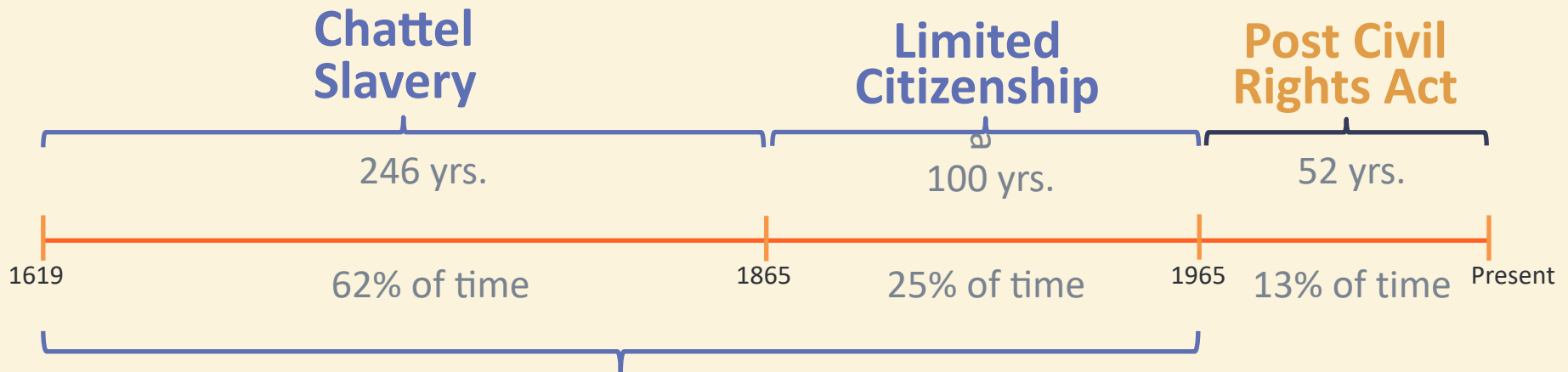
Levels of Racism



A photograph of two women sitting at a table in a modern, brightly lit room with large windows. The woman on the left, wearing glasses and a patterned top, is looking at a small object in her hand. The woman on the right, with curly hair and a dark top, is looking down at a tablet or notebook. The table has a coffee cup, a tablet, and some papers. The word "Institutional" is overlaid in white text in the center.

Institutional

Timeline of African American Experience



87% of the Black experience has been under explicit racial oppression.

100% of the U.S. Black experience has been in struggle for humanity and equality.

Reproductive Oppression in African American History

Hudgins v. Wright 1806

- Fundamental base of data collection on race and valuation

Origins of Gynecology

- Dr. J. Marion Sims “Father of Modern Gynecology”
- Experimental surgery on nonconsenting enslaved women

Eugenics- “well-born”

- 1883 Sir Francis Galton- Great Britain
- Believed that the human race could help direct its future by selectively breeding individuals who have “desired” traits.
- Used as medical justification of forced sterilization for Black people in U.S. after reconstruction


Historical trauma still contaminates thinking regarding reproductive rights for African-American women.

“American Indian or Alaska Native”

- Assets are owned and (mis)managed by the federal government
- Economic development is controlled by federal agencies
- Complex legal and bureaucratic barriers that discourage change

INDIAN LAND FOR SALE

GET A HOME
OF
YOUR OWN
EASY PAYMENTS



PERFECT TITLE
POSSESSION
WITHIN
THIRTY DAYS

FINE LANDS IN THE WEST

IRRIGATED GRAZING AGRICULTURAL
IRRIGABLE DRY FARMING

IN 1910 THE DEPARTMENT OF THE INTERIOR SOLD UNDER SEALED BIDS ALLOTTED INDIAN LAND AS FOLLOWS:

Location	Acres	Average Price per Acre	Location	Acres	Average Price per Acre
Colorado	5,211.21	\$7.27	Oklahoma	34,664.00	\$19.14
Idaho	17,013.00	24.85	Oregon	1,020.00	15.43
Kansas	1,684.50	33.45	South Dakota	120,445.00	16.53
Montana	11,034.00	9.86	Washington	4,879.00	41.37
Nebraska	5,641.00	36.65	Wisconsin	1,069.00	17.00
North Dakota	22,610.70	9.93	Wyoming	865.00	20.64

FOR THE YEAR 1911 IT IS ESTIMATED THAT 350,000 ACRES WILL BE OFFERED FOR SALE

For information as to the character of the land write for booklet, "INDIAN LANDS FOR SALE," to the Superintendent U. S. Indian School at any one of the following places:

CALIFORNIA: Banga, DOUGLAS: Irvine IDAHO: Lippai KANSAS: Forton Salsola	MISSISSIPPI: Bogum MISSOURI: Crow Agency NEBRASKA: Mary Salsola Waukegan	SOUTH DAKOTA: Fort Totten Fort Teton OKLAHOMA: Anadarko Catoomah Lawton Bartlesville Muskogee Pottawatomie	OKLAHOMA - Cont. Sapulpa Chickasaw Muskogee OREGON: Clatsop Agency Pendleton Seaside WASHINGTON: Fort Simcoe Fort Spokane Tolt WISCONSIN: Oconto
--	--	---	---

WALTER L. FISHER,
Secretary of the Interior

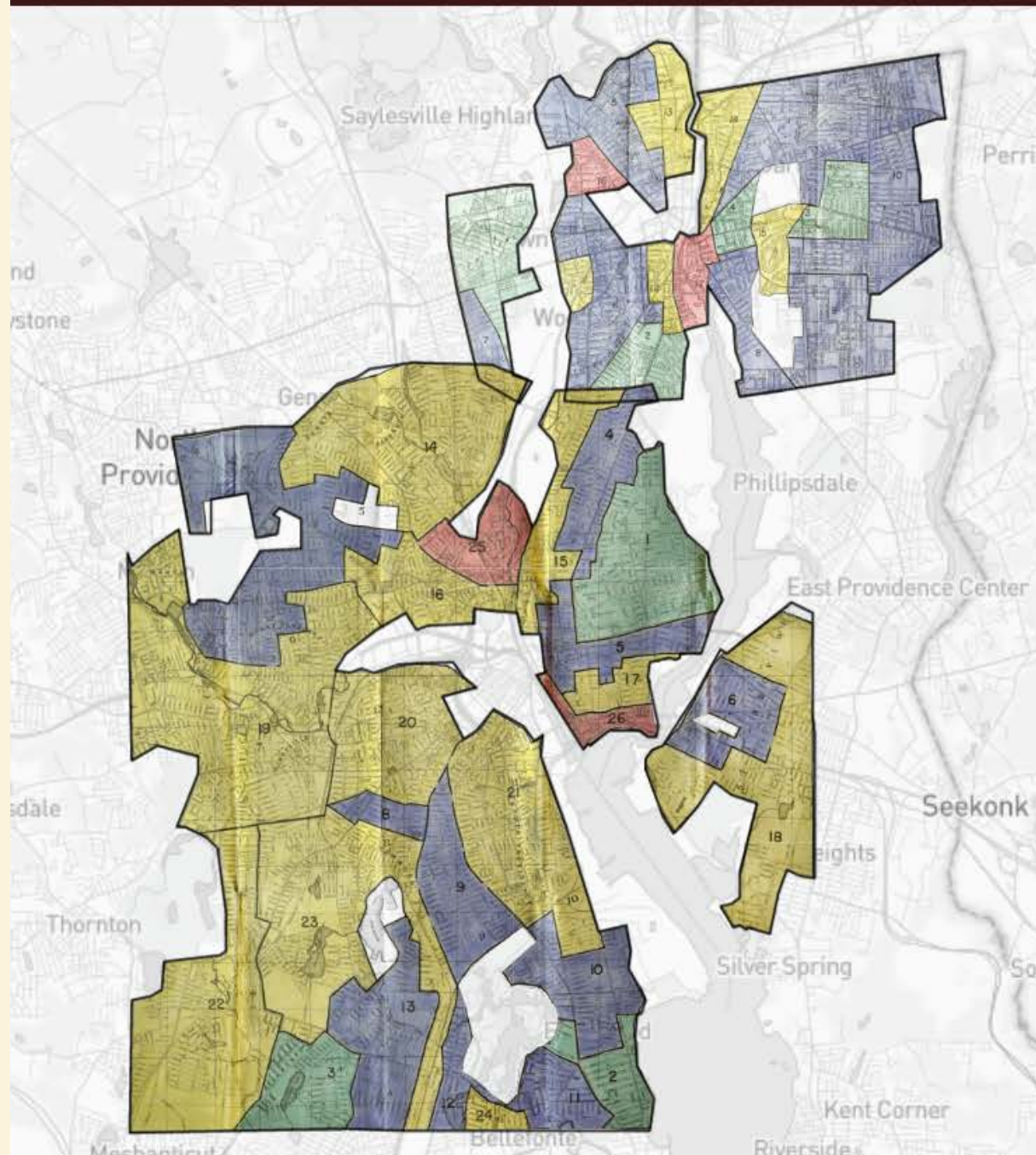
ROBERT G. VALENTINE,
Commissioner of Indian Affairs

Granny Midwifery and Medicalization of Birth

- Midwives provided most of the care for women in the South until mid-20th century
- Hospital-based obstetric care became accessible
- Obstetrics became norm
- By 1975, only 0.3% of births were attended by a midwife outside of hospitals
- Systemically devalued institution of granny midwifery



Mapping Inequality Redlining in New Deal America



Contemporary Policies

Contraception

TANF

Social Safety Net

Crack/Cocaine Crisis v Opioid Epidemic

Housing

Income and Pay Equity

Worker Protection Policies

A blue-tinted photograph of a woman and a young girl looking down at something together. The woman is on the left, leaning in, and the girl is on the right, smiling. The text "Personally Mediated" is overlaid in the center.

Personally Mediated

Implicit bias (noun):

1. Bias is the “implicit” ...unconscious activation of prejudice notions (of race, gender, ethnicity, age, etc.) that influences our judgment and decision-making capacity.

Devine, 1989

NEWS • 24 OCTOBER 2019 • UPDATE 26 OCTOBER 2019

Millions of black people affected by racial bias in health-care algorithms

Study reveals rampant racism in decision-making software used by US hospitals – and highlights ways to correct it.



Maternal Mortality and the Devaluation of Black Motherhood

By Jamila Taylor | Posted on April 11, 2018, 9:02 am



Why Racial Gaps In Maternal Mortality Persist

May 10, 2019 · 1:32 PM ET

PATTI NEIGHMOND

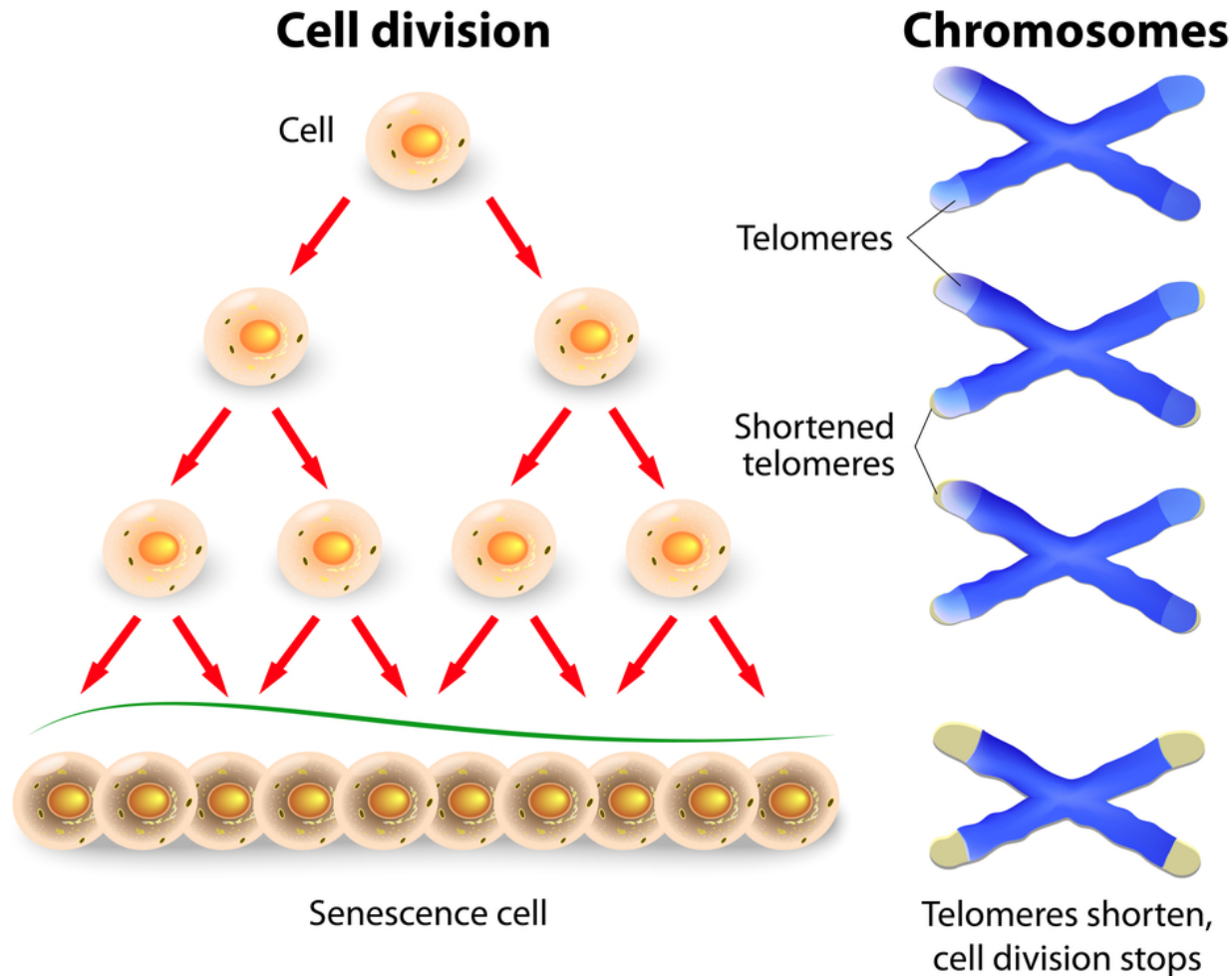


A photograph of a family in a hospital setting. A man is leaning over a baby, kissing its forehead. A woman is lying in the bed, smiling at the baby. The entire image has a blue tint. The word "Internalized" is written in white, bold, sans-serif font across the center of the image.

Internalized

Maternal stress during pregnancy could influence the biological clock for aging

Largest study to date on how telomere length of newborns are affected by external factors



T Send, M Gilles, V Codd, I A C Wolf, S Bardtke, F Streit, J Strohmaier, J Frank, D Schendel, M W Sütterlin, M Denniff, M Laucht, N J Samani, M Deuschle, M Rietschel, S H Witt. Telomere Length in Newborns is Related to Maternal Stress During Pregnancy. *Neuropsychopharmacology*, 2017; DOI: 10.1038/npp.2017.73

July 19, 2019

Association of Preterm Births Among US Latina Women With the 2016 Presidential Election

Alison Gemmill, PhD^{1,2}; Ralph Catalano, PhD³; Joan A. Casey, PhD³; [et al](#)

» [Author Affiliations](#) | [Article Information](#)

JAMA Netw Open. 2019;2(7):e197084. doi:10.1001/jamanetworkopen.2019.7084

MEDICINE AND SOCIETY

Health Effects of Dramatic Societal Events — Ramifications of the Recent Presidential Election

David R. Williams, Ph.D., M.P.H., and Morgan M. Medlock, M.D., M.Div.

Short report

Severe sociopolitical stressors and preterm births in New York City: 1 September 2015 to 31 August 2017 

Nancy Krieger¹, Mary Huynh², Wenhui Li³, Pamela D Waterman¹, Gretchen Van Wye^{2, 4}

[Author affiliations](#) +





Worldview & Frameworks

Human Rights

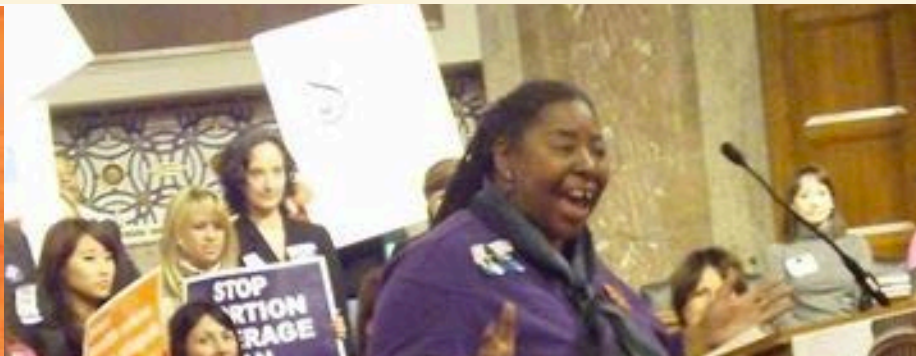
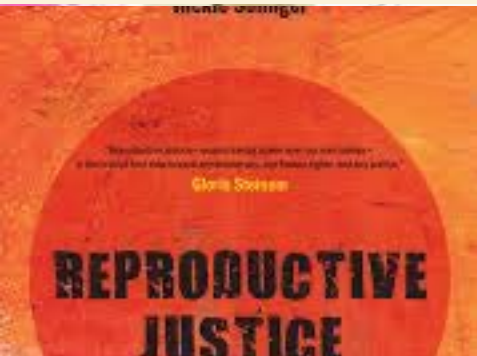
Article 25.

(2) Motherhood and childhood are **entitled** to special care and assistance. All children, whether born in or out of wedlock, shall enjoy the same protection.

Reproductive Justice

The human right to maintain personal bodily autonomy, have children, not have children, and parent the children we have in safe and sustainable communities.

-Loretta Ross



birth equity (*noun*):

1. The assurance of the conditions of optimal births for all people with a willingness to address racial and social inequalities in a sustained effort.

Joia Crear-Perry, MD
National Birth Equity Collaborative



Segregationists

Assimilationists

Anti-Racists

Thank you

Visit us at birthequity.org



Carmen Green, MPH
Director

cgreen@birthequity.org



@birthequity